

TSK STANDARD/STRONG CLOSED SPELTER SOCKET



This socket is lighter and stronger than the general JIS type socket. The wire ropes vary according to the type of sockets, as follows-

The standard type : Strand Rope

The strong type : Spiral Strand Rope, Locked Coil Strand Rope

Material : S35C

Surface Treatment : Self Color or Hot Dip Galvanizing

**TOKYO ROPE MFG.CO.,LTD. developed TSK Spelter Socket.

**We can also manufacture the products by using other materials and applying surface treatment other than the above.



AUZAC CO.,LTD.

26-229, Tomochoushiroji, Fukuyama-shi, Hiroshima, Japan

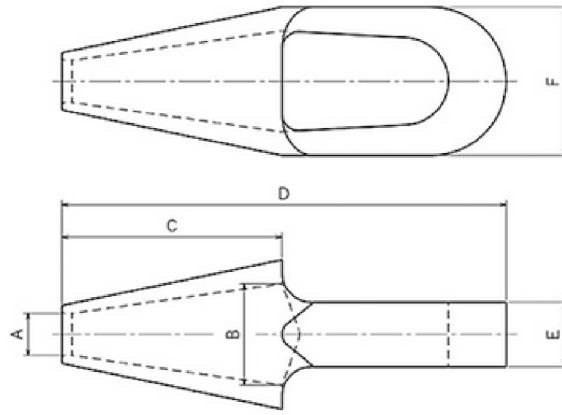
mail:info@auzac.jp

HP:<https://www.auzac.com/>



TSK CLOSED SPELTER SOCKET

STANDARD TYPE

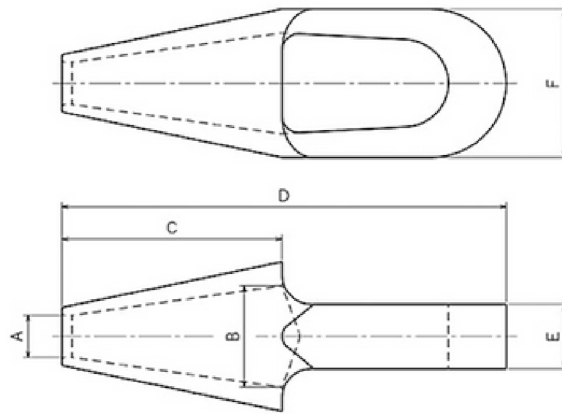


mm dimension

Model Number	M.B.L (Mtons)	for wire Φ (mm)	Dimensions(mm)						weight (kg)	S.W.L. (Mtons)
			ΦA	ΦB	C	D	E	F		
CSS TSK C-16	19.5	16	21	40	74	162	22	60	0.92	6.5
CSS TSK C-18	24.7	18	23	46	84	182	26	66	1.3	8.2
CSS TSK C-20	30.5	20	25	50	92	200	30	72	1.7	10.2
CSS TSK C-22	36.9	22	28	56	102	220	32	82	2.4	12.3
CSS TSK C-24	43.9	24	30	60	112	240	36	86	3	14.6
CSS TSK C-26	51.5	26	32	64	122	260	38	94	3.9	17.2
CSS TSK C-28	59.7	28	34	70	132	280	42	100	4.6	19.9
CSS TSK C-30	68.6	30	36	74	140	298	44	108	5.9	22.9
CSS TSK C-32	78	32	39	80	152	320	48	116	7.2	26.0
CSS TSK C-34	88.1	34	41	84	158	336	52	120	8.1	29.4
CSS TSK C-36	98.7	36	44	88	168	358	54	128	9.8	32.9
CSS TSK C-38	110	38	46	94	176	376	58	134	10	36.7
CSS TSK C-40	122	40	48	98	188	395	58	144	14	40.7
CSS TSK C-42	134	42	50	102	198	415	62	148	15	44.7
CSS TSK C-44	147	44	52	108	206	435	64	158	18	49
CSS TSK C-46	161	46	54	112	216	455	68	162	20	53.7
CSS TSK C-48	176	48	56	116	228	475	70	170	23	58.7
CSS TSK C-50	190	50	59	122	236	495	74	178	26	63
CSS TSK C-52	206	52	62	128	244	515	79	184	29	68.7
CSS TSK C-54	222	54	64	132	252	530	80	192	33	74
CSS TSK C-56	239	56	66	136	264	555	84	196	36	79.7
CSS TSK C-58	256	58	68	142	274	570	86	206	40	85
CSS TSK C-60	274	60	70	146	282	595	90	212	45	91
CSS TSK C-62	293	62	72	150	292	610	92	218	48	97.7
CSS TSK C-64	312	64	74	156	306	635	96	226	54	104
CSS TSK C-66	332	66	77	160	312	650	98	232	58	111
CSS TSK C-68	352	68	79	164	322	675	102	238	63	117
CSS TSK C-70	373	70	81	170	330	690	106	246	70	124
CSS TSK C-72	395	72	83	174	342	710	108	252	75	132
CSS TSK C-74	417	74	85	178	352	730	110	258	80	139
CSS TSK C-76	440	76	87	184	360	745	114	266	88	147
CSS TSK C-78	464	78	89	188	370	770	118	272	96	155
CSS TSK C-80	488	80	92	194	380	790	118	282	104	163
CSS TSK C-82	512	82	94	198	390	810	122	288	112	171
CSS TSK C-84	538	84	96	202	400	830	124	294	120	179
CSS TSK C-86	563	86	98	208	410	850	128	302	129	188
CSS TSK C-88	590	88	100	212	420	870	130	308	137	197
CSS TSK C-90	617	90	102	216	430	890	134	314	146	206
CSS TSK C-92	645	92	104	222	440	910	138	322	158	215
CSS TSK C-94	673	94	107	226	448	930	140	328	166	224
CSS TSK C-96	702	96	109	232	460	950	144	336	179	234
CSS TSK C-98	732	98	111	236	466	960	146	342	188	244
CSS TSK C-100	762	100	113	240	478	990	150	348	200	254

TSK CLOSED SPELTER SOCKET

STANDARD TYPE

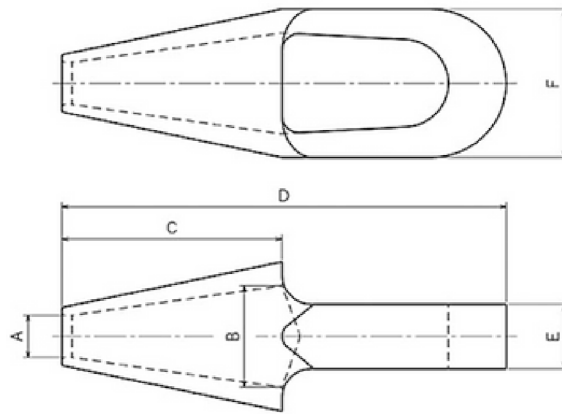


inch dimension

Model Number	M.B.L (Mtons)	for wire Φ (inch)	Dimensions(inch)						weight (kg)	S.W.L. (Mtons)
			ΦA	ΦB	C	D	E	F		
CSS TSK C-16	19.5	5/8	0.83	1.57	2.91	6.38	0.87	2.36	0.92	6.5
CSS TSK C-18	24.7	11/16 - 3/4	0.91	1.81	3.31	7.17	1.02	2.6	1.3	8.2
CSS TSK C-20	30.5	13/16	0.98	1.97	3.62	7.87	1.18	2.83	1.7	10.2
CSS TSK C-22	36.9	7/8	1.1	2.2	4.02	8.66	1.26	3.23	2.4	12.3
CSS TSK C-24	43.9	15/16	1.18	2.36	4.41	9.45	1.42	3.39	3	14.6
CSS TSK C-26	51.5	1 - 1 1/16	1.26	2.52	4.8	10.24	1.5	3.7	3.9	17.2
CSS TSK C-28	59.7	1 1/8	1.34	2.76	5.2	11.02	1.65	3.94	4.6	19.9
CSS TSK C-30	68.6	1 3/16	1.42	2.91	5.51	11.73	1.73	4.25	5.9	22.9
CSS TSK C-32	78	1 1/4	1.54	3.15	5.98	12.6	1.89	4.57	7.2	260
CSS TSK C-34	88.1	1 5/16	1.61	3.31	6.22	13.23	2.05	4.72	8.1	29.4
CSS TSK C-36	98.7	1 1/8 - 1 7/16	1.73	3.46	6.61	14.09	2.13	5.04	9.8	32.9
CSS TSK C-38	110	1 7/16 - 1 1/2	1.81	3.7	6.93	14.8	2.28	5.28	10	36.7
CSS TSK C-40	122	1 9/16	1.89	3.86	7.4	15.55	2.28	5.67	14	40.7
CSS TSK C-42	134	1 11/16	1.97	4.02	7.8	16.34	2.44	5.83	15	44.7
CSS TSK C-44	147	1 3/4	2.05	4.25	8.11	17.13	2.52	6.22	18	49
CSS TSK C-46	161	1 13/16	2.13	4.41	8.5	17.91	2.68	6.38	20	53.7
CSS TSK C-48	176	1 7/8	2.2	4.57	8.98	18.7	2.76	6.69	23	58.7
CSS TSK C-50	190	1 15/16 - 2	2.32	4.8	9.29	19.49	2.91	7.01	26	63
CSS TSK C-52	206	2 1/16	2.44	5.04	9.61	20.28	3.11	7.24	29	68.7
CSS TSK C-54	222	2 1/8	2.52	5.2	9.92	20.87	3.15	7.56	33	74
CSS TSK C-56	239	2 3/16	2.6	5.35	10.39	21.85	3.31	7.72	36	79.7
CSS TSK C-58	256	2 1/4 - 2 5/16	2.68	5.59	10.79	22.44	3.39	8.11	40	85
CSS TSK C-60	274	2 2/8	2.76	5.75	11.1	23.43	3.54	8.35	45	91
CSS TSK C-62	293	2 7/16	2.83	5.91	11.5	24.02	3.62	8.58	48	97.7
CSS TSK C-64	312	2 1/2	2.91	6.14	12.05	25	3.78	8.9	54	104
CSS TSK C-66	332	2 5/8	3.03	6.3	12.28	25.59	3.86	9.13	58	111
CSS TSK C-68	352	2 11/16	3.11	6.46	12.68	26.57	4.02	9.37	63	117
CSS TSK C-70	373	2 3/4	3.19	6.69	12.99	27.17	4.17	9.69	70	124
CSS TSK C-72	395	2 13/16 - 2 7/8	3.27	6.85	13.46	27.95	4.25	9.92	75	132
CSS TSK C-74	417	2 15/16	3.35	7.01	13.86	28.74	4.33	10.16	80	139
CSS TSK C-76	440	3	3.43	7.24	14.17	29.33	4.49	10.47	88	147
CSS TSK C-78	464	3 1/16	3.5	7.4	14.57	30.31	4.65	10.71	96	155
CSS TSK C-80	488	3 3/16	3.62	7.64	14.96	31.1	4.65	11.1	104	163
CSS TSK C-82	512	3 1/4	3.7	7.8	15.35	31.89	4.8	11.34	112	171
CSS TSK C-84	538	3 5/16	3.78	7.95	15.75	32.68	4.88	11.57	120	179
CSS TSK C-86	563	3 3/8	3.86	8.19	16.14	33.46	5.04	11.89	129	188
CSS TSK C-88	590	3 7/16 - 3 1/2	3.94	8.35	16.54	34.25	5.12	12.13	137	197
CSS TSK C-90	617	3 9/16	4.02	8.5	16.93	35.04	5.28	12.36	146	206
CSS TSK C-92	645	3 5/8	4.09	8.74	17.32	35.83	5.43	12.68	158	215
CSS TSK C-94	673	3 11/16	4.21	8.9	17.64	36.61	5.51	12.91	166	224
CSS TSK C-96	702	3 3/4 - 3 13/16	4.29	9.13	18.11	37.4	5.67	13.23	179	234
CSS TSK C-98	732	3 7/8	4.37	9.29	18.35	37.8	5.75	13.46	188	244
CSS TSK C-100	762	3 15/16	4.45	9.45	18.82	38.98	5.91	13.7	200	254

TSK CLOSED SPELTER SOCKET

STRONG TYPE

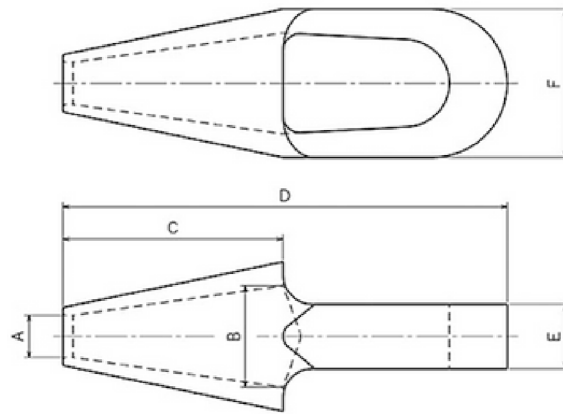


mm dimension

Model Number	M.B.L (Mtons)	for wire Φ (mm)	Dimensions (mm)						weight (kg)	S.W.L. (Mtons)
			ΦA	ΦB	C	D	E	F		
CSS TSKK C-20	39.4	20	27	58	114	242	34	86	2.9	14.6
CSS TSKK C-22	47.6	22	29	64	126	264	38	94	3.9	17.6
CSS TSKK C-24	56.7	24	31	70	142	292	42	102	5	21
CSS TSKK C-26	66.5	26	33	74	152	316	46	108	5.5	24.6
CSS TSKK C-28	77.2	28	35	80	164	342	50	118	8.1	28.6
CSS TSKK C-30	88.6	30	38	86	174	362	54	126	9.9	32.8
CSS TSKK C-32	101	32	41	92	188	386	56	136	12	37.4
CSS TSKK C-34	114	34	43	96	200	412	60	142	14	42.2
CSS TSKK C-36	128	36	45	102	210	432	64	150	16	47.4
CSS TSKK C-38	142	38	47	108	222	458	68	158	19	52.6
CSS TSKK C-40	157	40	50	114	236	485	70	168	23	58.2
CSS TSKK C-42	174	42	52	118	248	505	72	176	26	64.4
CSS TSKK C-44	191	44	54	124	258	525	76	184	30	70.7
CSS TSKK C-46	208	46	56	130	270	550	80	192	34	77
CSS TSKK C-48	227	48	58	134	286	585	84	198	38	84.1
CSS TSKK C-50	246	50	60	140	296	605	88	206	43	91.1
CSS TSKK C-52	266	52	64	146	306	625	90	216	48	98.5
CSS TSKK C-54	287	54	66	152	318	650	94	224	54	106
CSS TSKK C-56	309	56	68	158	332	675	98	232	61	114
CSS TSKK C-58	331	58	70	162	344	700	102	238	66	123
CSS TSKK C-60	354	60	72	168	356	720	106	248	74	131
CSS TSKK C-62	378	62	74	174	368	745	110	256	82	140
CSS TSKK C-64	403	64	76	178	382	770	112	264	90	149
CSS TSKK C-66	429	66	78	184	394	795	116	272	99	159
CSS TSKK C-68	455	68	80	190	406	820	120	280	108	169
CSS TSKK C-70	482	70	83	196	416	840	124	288	118	179
CSS TSKK C-72	510	72	85	200	430	870	128	294	126	189
CSS TSKK C-74	539	74	87	206	442	890	130	304	137	200
CSS TSKK C-76	568	76	89	212	454	915	134	312	149	210
CSS TSKK C-78	599	78	91	216	466	945	138	318	159	222
CSS TSKK C-80	630	80	93	222	480	970	140	328	174	233
CSS TSKK C-82	662	82	95	228	490	990	144	336	187	245
CSS TSKK C-84	694	84	97	234	506	1020	148	344	201	257
CSS TSKK C-86	728	86	99	238	516	1040	150	352	215	270
CSS TSKK C-88	762	88	101	244	528	1060	154	360	230	282
CSS TSKK C-90	797	90	104	250	540	1090	158	370	250	295
CSS TSKK C-92	833	92	106	256	554	1110	162	378	265	309
CSS TSKK C-94	870	94	108	260	564	1140	166	384	282	322
CSS TSKK C-96	907	96	110	266	578	1160	168	394	300	336
CSS TSKK C-98	945	98	112	272	590	1180	172	402	319	350
CSS TSKK C-100	984	100	114	276	602	1210	176	408	337	364

TSK CLOSED SPELTER SOCKET

STRONG TYPE



inch dimension

Model Number	M.B.L (Mtons)	for wire Φ (inch)	Dimensions (inch)						weight (kg)	S.W.L. (Mtons)
			ΦA	ΦB	C	D	E	F		
CSS TSKK C-20	39.4	13/16	1.06	2.28	4.49	9.53	1.34	3.39	2.9	14.6
CSS TSKK C-22	47.6	7/8	1.14	2.52	4.96	10.39	1.5	3.7	3.9	17.6
CSS TSKK C-24	56.7	15/16	1.22	2.76	5.59	11.5	1.65	4.02	5	21
CSS TSKK C-26	66.5	1 - 1/16	1.3	2.91	5.98	12.44	1.81	4.25	5.5	24.6
CSS TSKK C-28	77.2	1 1/8	1.38	3.15	6.46	13.46	1.97	4.65	8.1	28.6
CSS TSKK C-30	88.6	1 3/16	1.5	3.39	6.85	14.25	2.13	4.96	9.9	32.8
CSS TSKK C-32	101	1 1/4	1.61	3.62	7.4	15.2	2.2	5.35	12	37.4
CSS TSKK C-34	114	1 5/16	1.69	3.78	7.87	16.22	2.36	5.59	14	42.2
CSS TSKK C-36	128	1 1/8 - 1 7/16	1.77	4.02	8.27	17.01	2.52	5.91	16	47.4
CSS TSKK C-38	142	1 7/16 - 1 1/2	1.85	4.25	8.74	18.03	2.68	6.22	19	52.6
CSS TSKK C-40	157	1 9/16	1.97	4.49	9.29	19.09	2.76	6.61	23	58.2
CSS TSKK C-42	174	1.6875	2.05	4.65	9.76	19.88	2.83	6.93	26	64.4
CSS TSKK C-44	191	1.75	2.13	4.88	10.16	20.67	2.99	7.24	30	70.7
CSS TSKK C-46	208	1 13/16	2.2	5.12	10.63	21.65	3.15	7.56	34	77
CSS TSKK C-48	227	1.875	2.28	5.28	11.26	23.03	3.31	7.8	38	84.1
CSS TSKK C-50	246	1 15/16 - 2	2.36	5.51	11.65	23.82	3.46	8.11	43	91.1
CSS TSKK C-52	266	2.0625	2.52	5.75	12.05	24.61	3.54	8.5	48	98.5
CSS TSKK C-54	287	2 1/8	2.6	5.98	12.52	25.59	3.7	8.82	54	106
CSS TSKK C-56	309	2 3/16	2.68	6.22	13.07	26.57	3.86	9.13	61	114
CSS TSKK C-58	331	2 1/4 - 2 5/16	2.76	6.38	13.54	27.56	4.02	9.37	66	123
CSS TSKK C-60	354	2.25	2.83	6.61	14.02	28.35	4.17	9.76	74	131
CSS TSKK C-62	378	2.4375	2.91	6.85	14.49	29.33	4.33	10.08	82	140
CSS TSKK C-64	403	2.5	2.99	7.01	15.04	30.31	4.41	10.39	90	149
CSS TSKK C-66	429	2.625	3.07	7.24	15.51	31.3	4.57	10.71	99	159
CSS TSKK C-68	455	2.6875	3.15	7.48	15.98	32.28	4.72	11.02	108	169
CSS TSKK C-70	482	2.75	3.27	7.72	16.38	33.07	4.88	11.34	118	179
CSS TSKK C-72	510	2 13/16 - 2 7/8	3.35	7.87	16.93	34.25	5.04	11.57	126	189
CSS TSKK C-74	539	2.9375	3.43	8.11	17.4	35.04	5.12	11.97	137	200
CSS TSKK C-76	568	3	3.5	8.35	17.87	36.02	5.28	12.28	149	210
CSS TSKK C-78	599	3.0625	3.58	8.5	18.35	37.2	5.43	12.52	159	222
CSS TSKK C-80	630	3.1875	3.66	8.74	18.9	38.19	5.51	12.91	174	233
CSS TSKK C-82	662	3.25	3.74	8.98	19.29	38.98	5.67	13.23	187	245
CSS TSKK C-84	694	3.3125	3.82	9.21	19.92	40.16	5.83	13.54	201	257
CSS TSKK C-86	728	3.375	3.9	9.37	20.31	40.94	5.91	13.86	215	270
CSS TSKK C-88	762	3 7/16 - 3 1/2	3.98	9.61	20.79	41.73	6.06	14.17	230	282
CSS TSKK C-90	797	3.5625	4.09	9.84	21.26	42.91	6.22	14.57	250	295
CSS TSKK C-92	833	3.625	4.17	10.08	21.81	43.7	6.38	14.88	265	309
CSS TSKK C-94	870	3.6875	4.25	10.24	22.2	44.88	6.54	15.12	282	322
CSS TSKK C-96	907	3 3/4 - 3 13/16	4.33	10.47	22.76	45.67	6.61	15.51	300	336
CSS TSKK C-98	945	3.875	4.41	10.71	23.23	46.46	6.77	15.83	319	350
CSS TSKK C-100	984	3.9375	4.49	10.87	23.7	47.64	6.93	16.06	337	364