

# JIS F3432

# OPEN SPELTER SOCKET



This spelter socket is used for the standing riggings of the ship's mast and post. The steel wire ropes used are Galvanized 6 x 19 Class Wire Ropes.

The working load of this wire rope is 1/5 of the breaking load.

Material : S25C

Surface Treatment : Self Color or Hot Dip Galvanizing

\*\*We can also manufacture the products by using other materials and applying surface treatment other than the above.



AUZAC CO.,LTD.

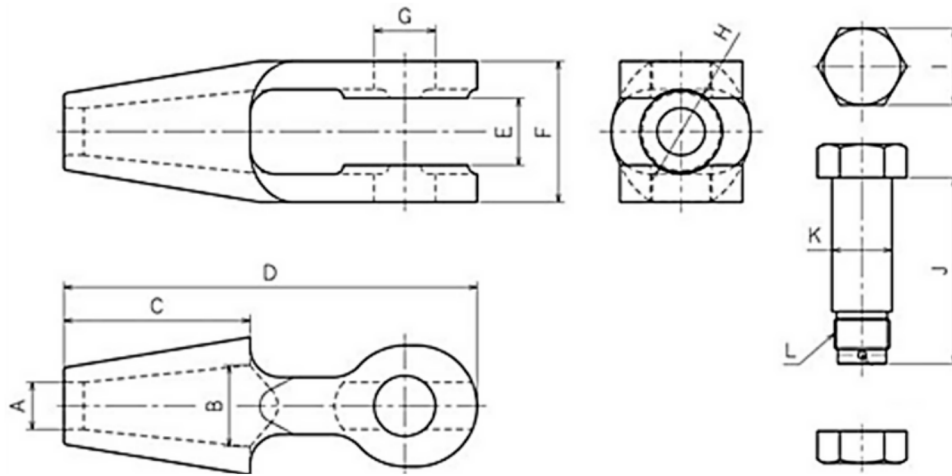
26-229, Tomochoushiroji, Fukuyama-shi, Hiroshima, Japan

mail:info@auzac.jp

HP:<https://www.auzac.com/>



# JIS F3432 OPEN SPELTER SOCKET



Model Number	M.B.L (Mtons)	for wire $\Phi$ (mm)	Dimensions (mm)											weight (kg)	*reference	
			$\Phi A$	$\Phi B$	C	D	E	F	$\Phi G$	$\Phi H$	I	J	$\Phi K$		L (metric thread)	S.W.L. (Mtons)
OSS JIS-16	11.7	16	20	37	88	193	32	58	26	40	32	81	25	1.8	M22	2.6
OSS JIS-18	14.9	18	23	40	95	210	35	65	29	43	36	89	28	2.2	M24	3.3
OSS JIS-20	18.5	20	25	44	103	227	37	73	32	47	41	101	31	3.1	M27	4.1
OSS JIS-22	23	22.4	30	49	111	245	40	80	35	52	46	110	34	4.1	M33	5.1
OSS JIS-24	26.6	24	32	52	119	262	44	88	38	56	50	120	37	5.4	M33	5.9
OSS JIS-25	31.1	25	33	56	127	281	48	96	41	60	60	134	40	7.1	M39	6.9
OSS JIS-28	36	28	36	61	135	298	51	103	44	65	65	143	43	8.8	M42	8
OSS JIS-30	41.4	30	38	64	143	316	54	110	47	68	70	152	46	10.9	M45	9.2
OSS JIS-32	47.3	31.5	40	68	151	335	56	118	50	72	75	162	49	13.5	M48	10.5
OSS JIS-34	51.8	33.5	42	71	159	353	59	125	54	75	75	169	52	15.8	M48	11.5
OSS JIS-36	58.5	35.5	44	76	168	373	62	132	57	80	80	178	55	18.9	M52	13
OSS JIS-38	65.3	37.5	47	80	177	392	66	138	60	84	85	190	58	22	M56	14.5
OSS JIS-40	74.3	40	49	84	186	413	70	146	63	88	85	198	61	26.2	M56	16.5
OSS JIS-42	83.3	42.5	52	88	196	434	72	152	66	92	90	206	64	30.3	M60	18.5
OSS JIS-45	94.5	45	54	96	214	474	79	167	72	101	100	225	70	39.9	M68	21
OSS JIS-48	103.5	47.5	57	99	223	494	82	174	75	104	100	232	73	44.6	M68	23
OSS JIS-50	114.8	50	60	104	233	516	85	181	78	109	105	241	76	49.9	M72 x 6	25.5
OSS JIS-53	126	53	63	108	242	536	89	189	81	113	110	253	79	56.8	M76 x 6	28
OSS JIS-56	141.8	56	66	114	256	567	93	199	85	119	115	265	83	66.3	M80 x 6	31.5
OSS JIS-60	162	60	70	124	279	619	101	215	92	129	120	287	90	83.1	M85 x 6	36
OSS JIS-63	180	63	74	128	289	641	105	221	95	133	120	293	93	89.4	M85 x 6	40

Model Number	M.B.L (Mtons)	for wire $\Phi$ (inch)	Dimensions (inch)											weight (kg)	*reference	
			$\Phi A$	$\Phi B$	C	D	E	F	$\Phi G$	$\Phi H$	I	J	$\Phi K$		L (metric thread)	S.W.L. (Mtons)
OSS JIS-16	11.7	5/8	0.79	1.46	3.46	7.6	1.26	2.28	1.02	1.57	1.26	3.19	0.98	1.8	M22	2.6
OSS JIS-18	14.9	11/16 - 3/4	0.91	1.57	3.74	8.27	1.38	2.56	1.14	1.69	1.42	3.5	1.1	2.2	M24	3.3
OSS JIS-20	18.5	13/16	0.98	1.73	4.06	8.94	1.46	2.87	1.26	1.85	1.61	3.98	1.22	3.1	M27	4.1
OSS JIS-22	23	7/8	1.18	1.93	4.37	9.65	1.57	3.15	1.38	2.05	1.81	4.33	1.34	4.1	M33	5.1
OSS JIS-24	26.6	15/16	1.26	2.05	4.69	10.31	1.73	3.46	1.5	2.2	1.97	4.72	1.46	5.4	M33	5.9
OSS JIS-25	31.1	1	1.3	2.2	5	11.06	1.89	3.78	1.61	2.36	2.36	5.28	1.57	7.1	M39	6.9
OSS JIS-28	36	1 1/8	1.42	2.4	5.31	11.73	2.01	4.06	1.73	2.56	2.56	5.63	1.69	8.8	M42	8
OSS JIS-30	41.4	1 3/16	1.5	2.52	5.63	12.44	2.13	4.33	1.85	2.68	2.76	5.98	1.81	10.9	M45	9.2
OSS JIS-32	47.3	1 1/4	1.57	2.68	5.94	13.19	2.2	4.65	1.97	2.83	2.95	6.38	1.93	13.5	M48	10.5
OSS JIS-34	51.8	1 5/16	1.65	2.8	6.26	13.9	2.32	4.92	2.13	2.95	2.95	6.65	2.05	15.8	M48	11.5
OSS JIS-36	58.5	1 1/8 - 1 7/16	1.73	2.99	6.61	14.69	2.44	5.2	2.24	3.15	3.15	7.01	2.17	18.9	M52	13
OSS JIS-38	65.3	1 7/16 - 1 1/2	1.85	3.15	6.97	15.43	2.6	5.43	2.36	3.31	3.35	7.48	2.28	22	M56	14.5
OSS JIS-40	74.3	1 9/16	1.93	3.31	7.32	16.26	2.76	5.75	2.48	3.46	3.35	7.8	2.4	26.2	M56	16.5
OSS JIS-42	83.3	1 11/16	2.05	3.46	7.72	17.09	2.83	5.98	2.6	3.62	3.54	8.11	2.52	30.3	M60	18.5
OSS JIS-45	94.5	1 3/4 - 1 13/16	2.13	3.78	8.43	18.66	3.11	6.57	2.83	3.98	3.94	8.86	2.76	39.9	M68	21
OSS JIS-48	103.5	1 7/8	2.24	3.9	8.78	19.45	3.23	6.85	2.95	4.09	3.94	9.13	2.87	44.6	M68	23
OSS JIS-50	114.8	1 15/16 - 2	2.36	4.09	9.17	20.31	3.35	7.13	3.07	4.29	4.13	9.49	2.99	49.9	M72 x 6	25.5
OSS JIS-53	126	2 1/16 - 2 1/8	2.48	4.25	9.53	21.1	3.5	7.44	3.19	4.45	4.33	9.96	3.11	56.8	M76 x 6	28
OSS JIS-56	141.8	2 3/16	2.6	4.49	10.08	22.32	3.66	7.83	3.35	4.69	4.53	10.43	3.27	66.3	M80 x 6	31.5
OSS JIS-60	162	2 2/8	2.76	4.88	10.98	24.37	3.98	8.46	3.62	5.08	4.72	11.3	3.54	83.1	M85 x 6	36
OSS JIS-63	180	2 1/2	2.91	5.04	11.38	25.24	4.13	8.7	3.74	5.24	4.72	11.54	3.66	89.4	M85 x 6	40