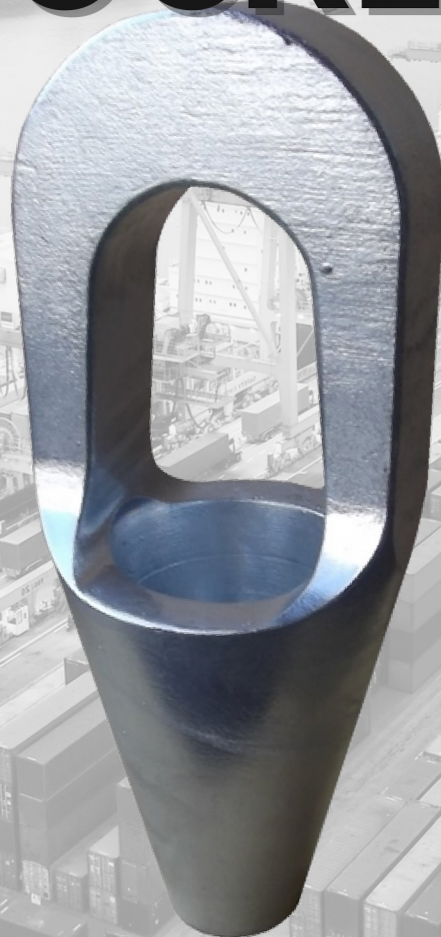


JIS F3432

CLOSED SPELTER SOCKET



This spelter socket is used for the standing riggings of the ship's mast and post. The steel wire ropes used are Galvanized 6 x 19 Class Wire Ropes.

The working load of this wire rope is 1/5 of the breaking load.

Material : S25C

Surface Treatment : Self Color or Hot Dip Galvanizing

**We can also manufacture the products by using other materials and applying surface treatment other than the above.



AUZAC CO.,LTD.

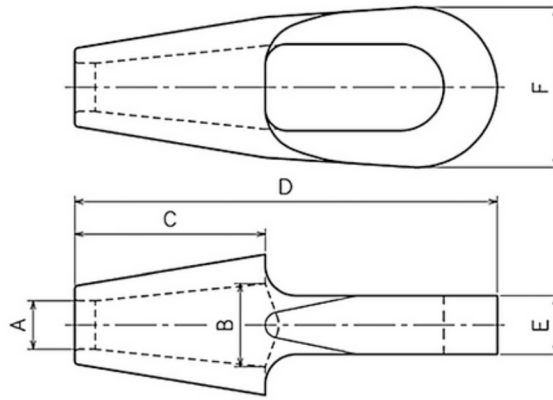
26-229, Tomochoushiroji, Fukuyama-shi, Hiroshima, Japan

mail:info@auzac.jp

HP:<https://www.auzac.com/>



JIS F3432 CLOSED SPELTER SOCKET



Model Number	M.B.L (Mtons)	for wire Φ (mm)	Dimensions(mm)						weight (kg)	*reference
			ΦA	ΦB	C	D	E	F		S.W.L. (Mtons)
CSS JIS-16	11.7	16	20	37	88	193	24	76	1.16	2.6
CSS JIS-18	14.9	18	23	40	95	210	27	82	1.76	3.3
CSS JIS-20	18.5	20	25	44	103	227	30	88	2.32	4.1
CSS JIS-22	23	22.4	30	49	111	245	33	96	3.2	5.1
CSS JIS-24	26.6	24	32	52	119	262	36	102	4	5.9
CSS JIS-25	31.1	25	33	56	127	281	39	108	5.15	6.9
CSS JIS-28	36	28	36	61	135	298	41	116	6.2	8
CSS JIS-30	41.4	30	38	64	143	316	44	122	7.75	9.2
CSS JIS-32	47.3	31.5	40	68	151	335	47	128	9.48	10.5
CSS JIS-34	51.8	33.5	42	71	159	353	50	136	11.5	11.5
CSS JIS-36	58.5	35.5	44	76	168	373	53	144	13.3	13
CSS JIS-38	65.3	37.5	47	80	177	392	56	150	15.5	14.5
CSS JIS-40	74.3	40	59	84	186	413	59	158	18.1	16.5
CSS JIS-42	83.3	42.5	52	88	196	434	61	166	22.2	18.5
CSS JIS-45	94.5	45	54	96	216	474	67	182	26.6	21
CSS JIS-48	103.5	47.5	57	99	223	494	70	190	30.5	23
CSS JIS-50	114.8	50	60	104	233	516	73	198	35.5	25.5
CSS JIS-53	126	53	63	108	242	536	76	206	40.2	28
CSS JIS-56	141.8	56	66	114	256	567	80	218	45.2	31.5
CSS JIS-60	162	60	70	124	279	619	87	238	58.3	36
CSS JIS-63	180	63	74	128	289	641	90	246	64	40

Model Number	M.B.L (Mtons)	for wire Φ (inch)	Dimensions(inch)						weight (kg)	*reference
			ΦA	ΦB	C	D	E	F		S.W.L. (Mtons)
CSS JIS-16	11.7	5/8	0.79	1.46	3.46	7.6	0.94	2.99	1.16	2.6
CSS JIS-18	14.9	11/16 - 3/4	0.91	1.57	3.74	8.27	1.06	3.23	1.76	3.3
CSS JIS-20	18.5	13/16	0.98	1.73	4.06	8.94	1.18	3.46	2.32	4.1
CSS JIS-22	23	7/8	1.18	1.93	4.37	9.65	1.3	3.78	3.2	5.1
CSS JIS-24	26.6	15/16	1.26	2.05	4.69	10.31	1.42	4.02	4	5.9
CSS JIS-25	31.1	1	1.3	2.2	5	11.06	1.54	4.25	5.15	6.9
CSS JIS-28	36	1 1/8	1.42	2.4	5.31	11.73	1.61	4.57	6.2	8
CSS JIS-30	41.4	1 3/16	1.5	2.52	5.63	12.44	1.73	4.8	7.75	9.2
CSS JIS-32	47.3	1 1/4	1.57	2.68	5.94	13.19	1.85	5.04	9.48	10.5
CSS JIS-34	51.8	1 5/16	1.65	2.8	6.26	13.9	1.97	5.35	11.5	11.5
CSS JIS-36	58.5	1 1/8 - 1 7/16	1.73	2.99	6.61	14.69	2.09	5.67	13.3	13
CSS JIS-38	65.3	1 7/16 - 1 1/2	1.85	3.15	6.97	15.43	2.2	5.91	15.5	14.5
CSS JIS-40	74.3	1 9/16	2.32	3.31	7.32	16.26	2.32	6.22	18.1	16.5
CSS JIS-42	83.3	1 11/16	2.05	3.46	7.72	17.09	2.4	6.54	22.2	18.5
CSS JIS-45	94.5	1 3/4 - 1 13/16	2.13	3.78	8.5	18.66	2.64	7.17	26.6	21
CSS JIS-48	103.5	1 7/8	2.24	3.9	8.78	19.45	2.76	7.48	30.5	23
CSS JIS-50	114.8	1 15/16 - 2	2.36	4.09	9.17	20.31	2.87	7.8	35.5	25.5
CSS JIS-53	126	2 1/16 - 2 1/8	2.48	4.25	9.53	21.1	2.99	8.11	40.2	28
CSS JIS-56	141.8	2 3/16	2.6	4.49	10.08	22.32	3.15	8.58	45.2	31.5
CSS JIS-60	162	2 2/8	2.76	4.88	10.98	24.37	3.43	9.37	58.3	36
CSS JIS-63	180	2 1/2	2.91	5.04	11.38	25.24	3.54	9.69	64	40